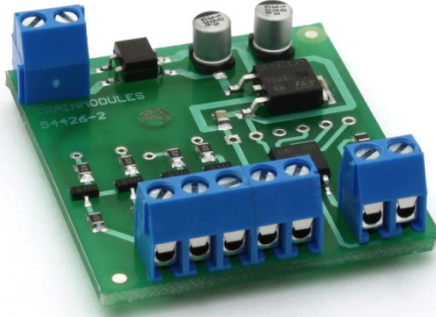


TM-54426-#



TRAINMODULES



Light effect generator

User's manual



5 998975 300698



© 2011 BioDigit Ltd.

All rights reserved. It is forbidden to reproduce and/or publish the contents of the present document in any form including electronic and mechanical design without the written permission of BioDigit Ltd.



Safety warning

During the operation of the device the specified technical parameters shall always be met. At the installation the environment shall be fully taken into consideration. The device must not be exposed to moisture and direct sunshine.

A soldering tool may be necessary for the installation and/or mounting of the devices, which requires special care.

During the installation it shall be ensured that the bottom of the device should not contact with a conductive (e.g. metal) surface!

Contents

Safety warning	1
Properties	2
Technical parameters	2
Short description	2
Wiring	2
Guarantee and legal statement	5

Properties

- Four independent output channels
- DC and AC supply
- Controllable input *
- Low idle mode current consumption

* Only in case of certain light effect modes

Technical parameters

Supply voltage: 7-24V AC/DC

Idle mode current consumption: 20 mA

Max. current consumption: 80 mA

Dimensions: 35x41 mm

Short description

The various light effects highly contribute to the view of your board. This module produces a lot of light effects (depending on the order number).

Order numbers and light effects:

TM-54426-A: Flaming

TM-54426-B: Arc welding light

TM-54426-C: Random short flashing (e.g. traffipax flash)

TM-54426-D: Watching TV (random cold color casts)

TM-54426-E: RGB color mixer (random colors, e.g. advertisements)

TM-54426-F: Neon tube ignition

TM-54426-G: Gas lamp glowing

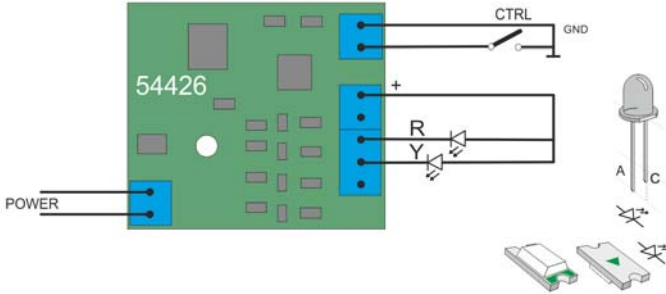
The light effect module controls one light effect only; each light effect has its own order number!

Wiring

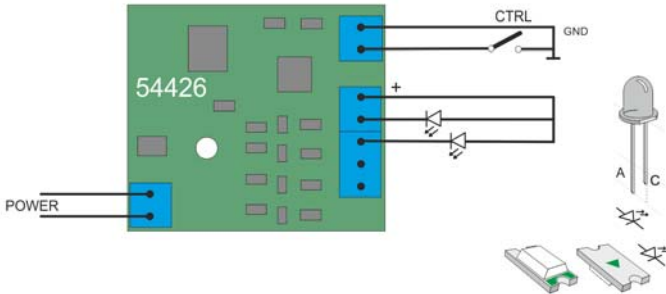
The supply voltage is to be connected to "**POWER**" points.

In case of some light effects an external control or a mode selection device can be connected to the "CTRL" input.

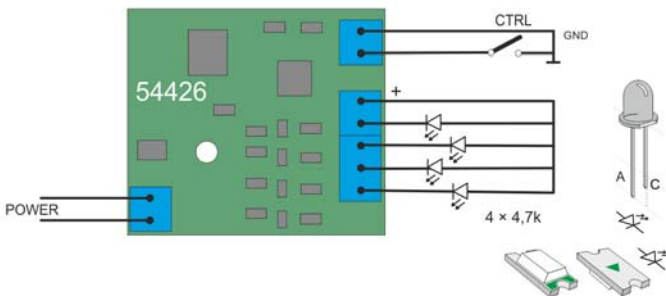
1. Flaming (A)



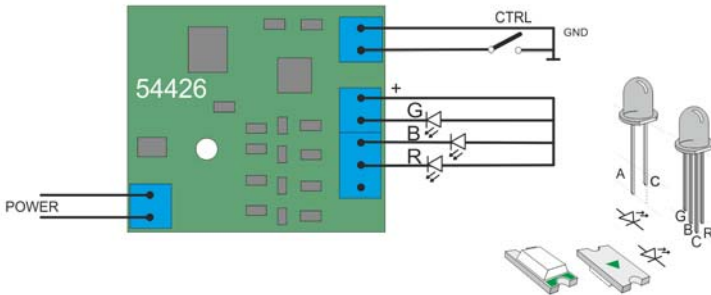
2. Arc welding light (B)



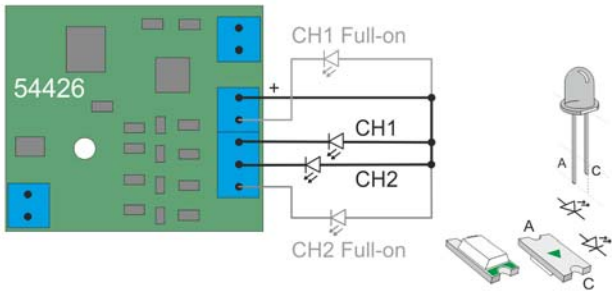
3. Random short flashing (C)



- 4. Watching TV (D),
- 5. RGB color mixing (E)



- 6. Neon tube ignition (F),
- 7. Gas lamp glowing (G)



Guarantee and legal statement

Each parameter of the device was submitted to comprehensive testing prior to marketing. The manufacturer undertakes one year guarantee for the product. Defects occurred during this period will be repaired by the manufacturer free of charge against the presentation of the invoice.

The validity of the guarantee will cease in case of improper usage and/or treatment.

Attention! By virtue of the European EMC directive the product can be used solely with devices provided with CE marking.

The mentioned standards and branch names are the trademarks of the firms concerned.

TrainModules – BioDigit Ltd
Kerepesi street 92.
H-1144, Budapest

Made in Hungary.

Tel.: +36 1 46-707-64
<http://www.trainmodules.hu/>